

# Finding Smarter Balance

## February 12, 2014 – Early Release Day Professional Development Plan



MATERIALS NEEDED – iPad or computer device; note paper; highlighter; beverage

**YOU WILL NOT RECEIVE A SCORE!!!!**

1. Teachers and ed techs should take the FULL practice test <http://sbac.portal.airast.org/practice-test/> - Scroll to the bottom of the page and click on the Student Interface Practice and Training Tests (see image below). Third to fifth grade teachers should take the Math assessment; 6-12 should take the assessment that most applies to their content.



2. Click on SIGN IN (Do not alter Guest status.)

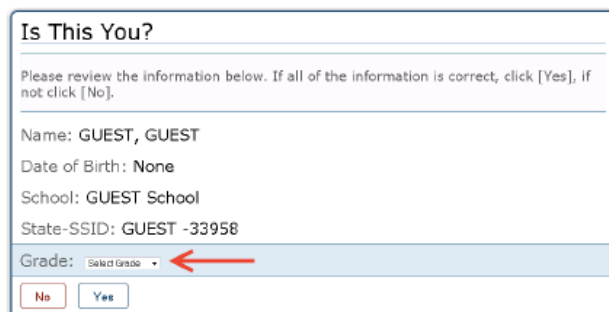
3. **Select a Grade-Level** (refer to next 2 pages according to your grade-level options). PLEASE start by taking the assessment for your level (titled G8 Math or G8 ELA). You can explore the training tests and performance tasks another time.

### Step 1: Select a Grade Level

Select a grade level from the drop-down list; this will determine the practice tests you can access.

1. Select a Grade Level.
2. Click [Yes] to continue.

### Is This You? Screen



Is This You?

Please review the information below. If all of the information is correct, click [Yes], if not click [No].

Name: GUEST, GUEST  
Date of Birth: None  
School: GUEST School  
State-SSID: GUEST -33958  
Grade: Select Grade

No Yes

# Finding Smarter Balance

## February 12, 2014 – Early Release Day Professional Development Plan

4.

**Choose Settings:**

**ELA HS Training Test**

Language:

Masking:

Strikethrough:

Highlight:

Mark for Review:

Color Choices:

Test Shell:

Expandable Passages:

Students will have color choices for their screens.....go figure!

Black on White

Black on Rose


Yellow on Blue

Medium Gray on Light Gray

Reverse Contrast

5.

**Sound Check**

 Click on the sound icon to hear the sound.  
If you hear the sound, click [Yes]. If not, click [No].

NOT ALL Practice Tests have this, but in case yours does.....At this screen, I did not hear the sound yet clicked "No" and proceeded just fine...I was able to access sound when needed.

### Step 4: Confirm Selected Test and Settings

1. Review the screen and confirm the test and settings.
  - If the settings are not correct, click [No]. You will return to Step 2, Select a Practice Test.
  - If the settings are correct, click [Yes, Start My Test] to proceed.

### Is This Your Test? Screen

**Is This Your Test?**

Session ID: GUEST Session

**G5 Math**

Color Choices: Black on White

Language: English

Print Size: No default zoom applied

Text to Speech: No Text to Speech

Word List: No Word List Available

Is the test listed above the test you want to take? If it is, click [Yes, Start My Test], if not, click [No].

# Finding Smarter Balance

## February 12, 2014 – Early Release Day Professional Development Plan

6.

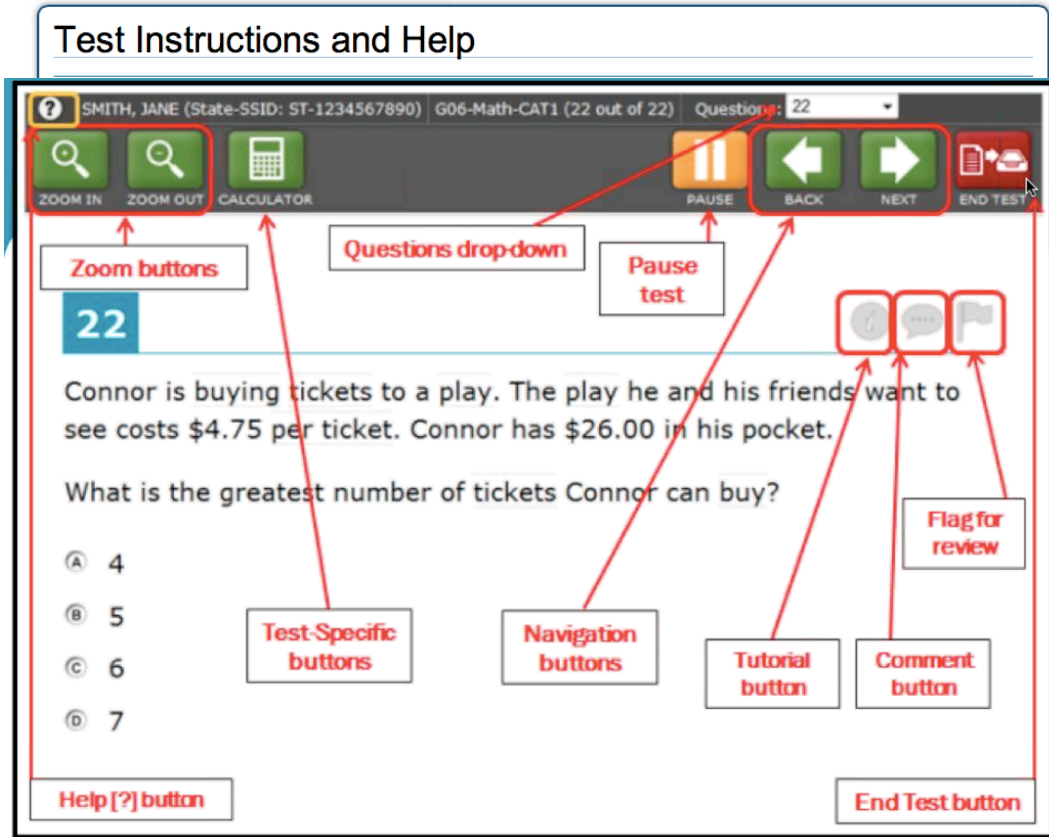


Image credit: sbac.portal.arast.org/practice-test/

7.

Terms/Questions:	Use the SCROLL bar to answer these Qu's:
1. Locate the zoom buttons.	How many are there? _____
2. Locate the Question Drop-Down.	For what purpose will this serve (you may need to return to this once you're "experiencing" the practice test)? _____ _____
3. Locate the Pause Test button and write the number <u>20</u> next to it.	What is the significance of the 20 and how will this differ for performance tasks? _____ _____
4. Locate Flag for Review	Why would a student use this function? _____ _____

## Finding Smarter Balance

### February 12, 2014 – Early Release Day Professional Development Plan

Terms/Questions:	Use the SCROLL bar to answer these Qu's:
5. What is an example of a Test-Specific Button?	_____
6. For which tests are the calculators available?	_____
7. What are the two navigation buttons?	_____ & _____
8. For what would the Tutorial Button be used?	_____ _____
9. For what would the Comment button be used?	_____ _____
10. What is the difference between GLOBAL TOOLS and STIMULUS/QUESTION TOOLS?	_____ _____ _____
11. How do you enlarge a reading passage on the left side of the screen?	_____ _____
12. How do you revert to the default size for that passage?	_____ _____
13. How will students know if a word or phrase is part of the Glossary?	_____ _____
14. What is the highlight color?	_____
15. How will you access this tool while taking the assessment?	_____ _____
16 How will you access the Notepad and for what purpose?	_____ _____

# Finding Smarter Balance

## February 12, 2014 – Early Release Day Professional Development Plan

Terms/Questions:	Use the SCROLL bar to answer these Qu's:
17. How will you access the Strikethrough tool and for what purpose?	<hr/> <hr/>
18. Where and how will you access the Tutorial tool?	<hr/> <hr/>

More helpful hints for Test Instructions below....

### Test Instructions and Help

---

Click [?] to access this Help Guide at any time during your test. Scroll down for more information.

---

#### Test Rules

##### Basic Test Rules

- You cannot skip questions. (You can flag [mark] a question for review and return to it later.)
- You must answer all questions on a page before moving on to the next page. Some pages contain multiple questions. You may need to use the vertical scroll bar to view all questions on a page.
- You may review past questions and change your answer (see Pause Rules below).

##### Pause Rules

- You can pause your test at any time. You will be presented with a warning message asking you to verify that you want to pause the test.
  - **If your test is paused for less than 20 minutes**, you can review questions you already answered.
  - **If your test is paused for more than 20 minutes**, you cannot review questions you already answered. (The only exception is if you pause on a page that has at least one unanswered question.)

[Return to Login](#) [Begin Test Now](#)

### Test Instructions and Help

---

Click [?] to access this Help Guide at any time during your test. Scroll down for more information.

---

#### About Print-on-Demand and Text-to-Speech

*If you have Print-on-Demand or Text-to-Speech turned on for your test, read this section.*

- **Print-on-Demand**  
You can request a printout of reading passages and/or questions.
  - To print a passage, click the **[Print Passage]** button. Your print request will be sent to your TA for approval.
  - To print a question, click the printer icon for that question. Your print request will be sent to your TA for approval.
- **Text-to-Speech (Speak)**  
If you are taking a test with the secure browser, you can listen to passages, questions, and selected-response answer options.
  - To listen to a reading passage, right-click anywhere on the passage and select the **[Speak]** option you want.  
*Note: You can also select a paragraph and right-click to listen to that paragraph only.*
  - To listen to a question or answer option, right-click in that area. Select the **[Speak]** option you want.

[Return to Login](#) [Begin Test Now](#)

# Finding Smarter Balance

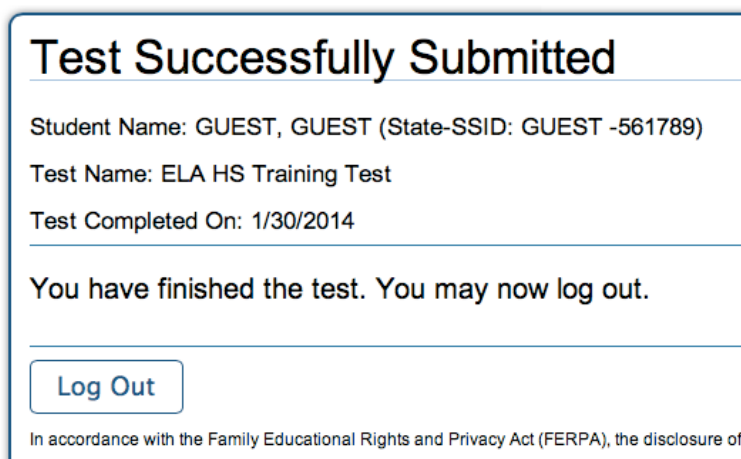
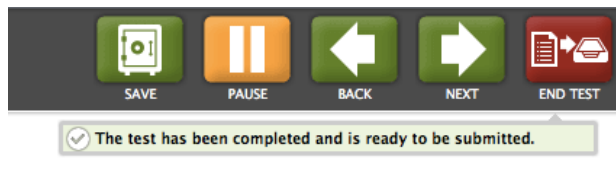
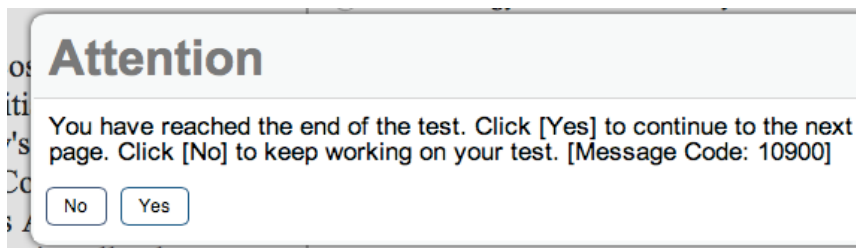
## February 12, 2014 – Early Release Day Professional Development Plan

As you FINALLY begin taking the Practice Test, have your notepaper ready. Make a list of the ACTION VERBS for each question. This will be very important as we prepare students. Also, you may want to record some of your responses. Your answers will NOT save anywhere, but there is an answer key for you to view if you want to compare an answer at another time.....So relax and go for it!

At the end of the test.....

you can click on ANY question

and return to review it.



Once you Log Out, you will NOT be able to view your answers, so make sure you've jotted down what you want to check.....